



METALLIZED POLYESTER FILM CAPACITORS

MMWA-EF

MMWA-EF SERIES

Previous Series

◆FEATURES

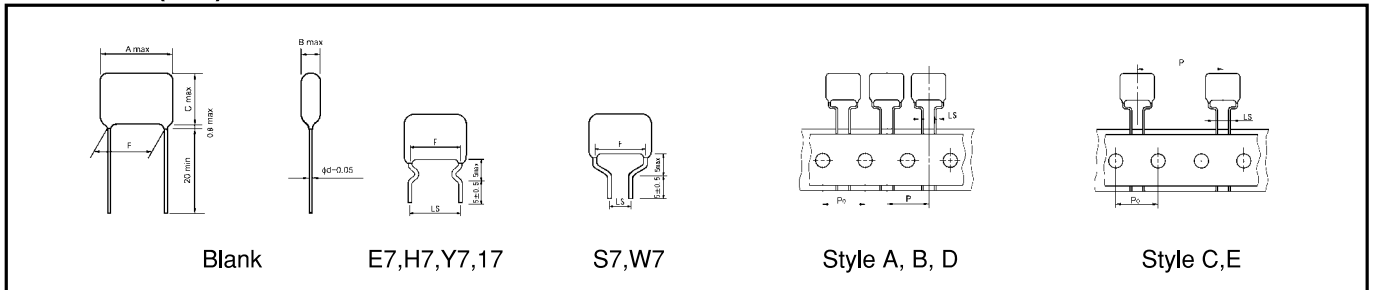
- These capacitors provide self-healing.
- Coated with flame-retardant (UL94 V-0) epoxy resin.



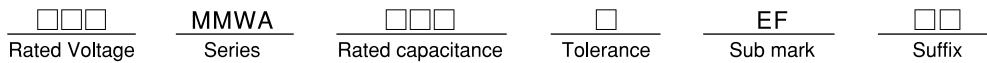
◆SPECIFICATIONS

Category temperature	-25°C ~ +85°C
Rated voltage (U _R)	125VAC, 250VAC
Capacitance tolerance	±10%(K), ±20%(M)
tan δ	0.01max at 1kHz
Voltage proof	U _R ×230% 60s
Insulation resistance	2000MΩ min
Reference standard	電JIS C 5101-1

◆OUTLINE(mm)



◆PART NUMBER



Symbol	U _R
125	125VAC
250	250VAC

Symbol	Tolerance
K	±10%
M	±20%

Symbol	Lead style	Symbol	Lead style
Blank	Long lead type	W7	Lead forming cut LS=7.5
E7	Lead forming cut LS=7.5	TC	Style A, Ammo pack P=12.7 Po=12.7 LS=5.0
H7	Lead forming cut LS=10.0	TX	Style B, Ammo pack P=15.0 Po=15.0 LS=5.0
Y7	Lead forming cut LS=15.0	TL(F=10) TJ(F≥15)	Style C, Ammo pack P=25.4 Po=12.7 LS=5.0
17	Lead forming cut LS=22.5	TH	Style D, Ammo pack P=15.0 Po=15.0 LS=7.5
S7	Lead forming cut LS=5.0	TN	Style E, Ammo pack P=30.0 Po=15.0 LS=7.5



METALLIZED POLYESTER FILM CAPACITORS

MMWA-EF

◆ **DIMENSIONS AND QUANTITY**

◆ **RATED VOLTAGE : 125VAC**

Part No.	cap(μ F)	Dimensions (mm)						Typical Packaging Quantity (pcs)					
								Long Lead type		Taping Ammo pack type - style			
		A	B	C	F \pm 1.5	LS \pm 0.5	d	Bag	Carton	A	B, D	C	E
125MMWA103□EF**	0.01	10.5	5.5	9.5	7.5	5.0/7.5	0.6	200	6,000	1,000	—	—	—
125MMWA153□EF**	0.015	10.5	5.5	9.5	7.5	5.0/7.5	0.6	200	6,000	1,000	—	—	—
125MMWA223□EF**	0.022	10.5	5.0	9.5	7.5	5.0/7.5	0.6	200	6,000	1,000	—	—	—
125MMWA333□EF**	0.033	10.5	5.5	9.5	7.5	5.0/7.5	0.6	200	6,000	1,000	—	—	—
125MMWA473□EF**	0.047	10.5	6.0	10.5	7.5	5.0/7.5	0.6	200	6,000	1,000	—	—	—
125MMWA683□EF**	0.068	10.5	6.0	12.5	7.5	5.0/7.5	0.6	200	6,000	1,000	—	—	—
125MMWA104□EF**	0.1	10.5	7.0	13.5	7.5	5.0/7.5	0.6	200	5,000	1,000	—	—	—
125MMWA154□EF**	0.15	13.0	7.0	13.0	10.0	5.0/7.5/10.0	0.6	200	4,000	—	500	500	—
125MMWA224□EF**	0.22	13.0	8.0	15.0	10.0	5.0/7.5/10.0	0.6	200	3,000	—	500	400	—
125MMWA334□EF**	0.33	18.5	8.0	14.5	15.0	5.0/7.5/15.0	0.8	100	2,000	—	—	400	300
125MMWA474□EF**	0.47	18.5	8.5	17.0	15.0	5.0/7.5/15.0	0.8	100	2,000	—	—	400	300
125MMWA684□EF**	0.68	26.0	8.0	15.5	22.5	22.5	0.8	200	2,000	—	—	—	—
125MMWA105□EF**	1.0	26.0	9.5	17.0	22.5	22.5	0.8	200	800	—	—	—	—

□ : Tolerance (K:±10%, M:±20%) ** : Suffix

◆ **RATED VOLTAGE : 250VAC**

Part No.	cap(μ F)	Dimensions (mm)						Typical Packaging Quantity (pcs)					
								Long Lead type		Taping Ammo pack type - style			
		A	B	C	F \pm 1.5	LS \pm 0.5	d	Bag	Carton	A	B, D	C	E
250MMWA103□EF**	0.01	13.0	5.0	9.0	10.0	5.0/7.5/10.0	0.6	200	6,000	—	1,000	500	—
250MMWA153□EF**	0.015	13.0	6.0	10.0	10.0	5.0/7.5/10.0	0.6	200	6,000	—	1,000	500	—
250MMWA223□EF**	0.022	13.0	6.5	11.0	10.0	5.0/7.5/10.0	0.6	200	4,000	—	1,000	500	—
250MMWA333□EF**	0.033	13.0	7.0	13.5	10.0	5.0/7.5/10.0	0.6	200	4,000	—	500	500	—
250MMWA473□EF**	0.047	13.0	8.0	15.0	10.0	5.0/7.5/10.0	0.6	200	3,000	—	500	400	—
250MMWA683□EF**	0.068	18.5	7.5	14.0	15.0	5.0/7.5/15.0	0.8	100	3,000	—	—	400	400
250MMWA104□EF**	0.1	18.5	8.5	16.5	15.0	5.0/7.5/15.0	0.8	100	2,000	—	—	400	300
250MMWA154□EF**	0.15	18.5	10.0	18.0	15.0	5.0/7.5/15.0	0.8	200	1,000	—	—	—	—
250MMWA224□EF**	0.22	18.5	12.0	20.0	15.0	5.0/7.5/15.0	0.8	200	1,000	—	—	—	—
250MMWA334□EF**	0.33	26.0	11.0	21.0	22.5	22.5	0.8	200	1,000	—	—	—	—
250MMWA474□EF**	0.47	26.0	13.0	23.0	22.5	22.5	0.8	100	1,000	—	—	—	—

□ : Tolerance (K:±10%, M:±20%) ** : Suffix

- Note) 1. Operating circuit (Fig.1, Fig.2)
 2. When operating capacitor for noise suppression, voltage of pulse applied to the capacitor shall be within value specified in Table 1.

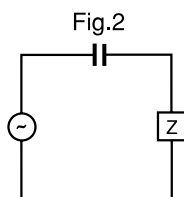
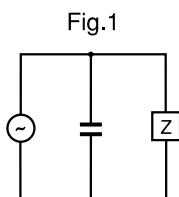


Table 1

Rated Voltage	Pulse Voltage
125VAC	250Vo-p
250VAC	630Vo-p