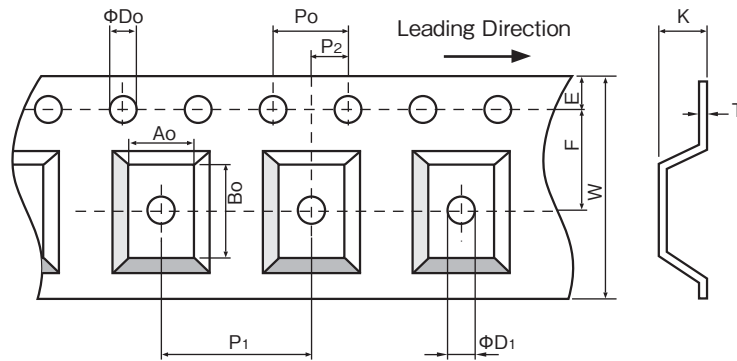
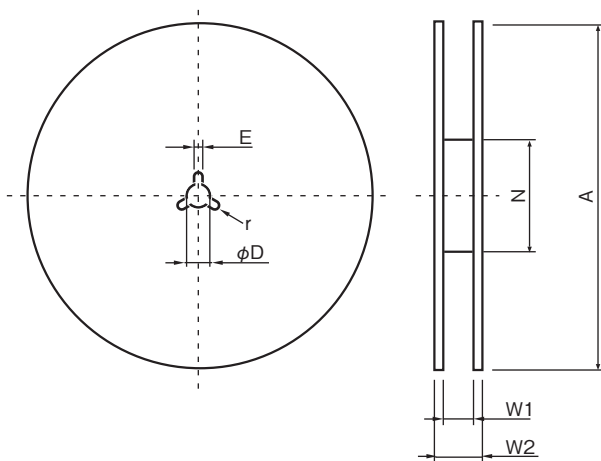


◆ CARRIER TAPE DIMENSIONS



Chip size	Taping code	Dimensions [mm]											
		A ₀ ±0.1	B ₀ ±0.1	W ±0.3	F ±0.05	E ±0.1	P ₁ ±0.1	P ₂ ±0.04	P ₀ ±0.1	ϕD ₀ ±0.1	ϕD ₁ +0.2/-0	K ±0.1	T ±0.05
3216	A 1	2.0	3.6	8.0	3.5	1.75	4.0	2.0	4.0	1.5	1.0	1.4	0.20
	A 2											1.8	0.25
3225	B 1	2.9	3.6	8.0	3.5	1.75	4.0	2.0	4.0	1.5	1.0	1.8	0.25
	B 2											2.2	0.25
	B 3											2.4	0.25
4532	C 1	3.6	4.9	12.0	5.5	1.75	8.0	2.0	4.0	1.5	1.5	1.8	0.25
	C 2											2.2	0.25
	C 3											2.4	0.25
	C 4											3.0	0.25
5750	D 1	5.4	6.1	12.0	5.5	1.75	8.0	2.0	4.0	1.5	1.5	2.2	0.25
	D 2											2.6	0.25
	D 3											3.0	0.25

◆ REEL DIMENSIONS

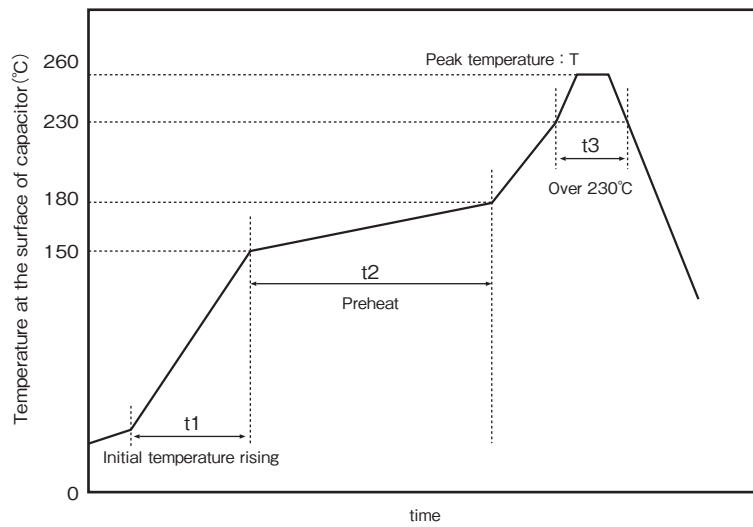


Chip size	Taping code	Reel size	Max. packaging
3216	A1	ϕ180mm	3000pcs/reel
	A2	ϕ180mm	2000pcs/reel
3225	B1, B2, B3	ϕ180mm	2000pcs/reel
4532	C1, C2	ϕ180mm	1000pcs/reel
		ϕ255mm	2000pcs/reel
	C3, C4	ϕ180mm	500pcs/reel
		ϕ255mm	1500pcs/reel
5750	D1, D2	ϕ180mm	1000pcs/reel
		ϕ255mm	2000pcs/reel
	D3, D4	ϕ180mm	500pcs/reel
		ϕ255mm	1500pcs/reel

Taping code	Dimensions [mm]						
	A ±1.0	N ±1.0	W1 ±1.0	W2 ±1.0	ϕD ±0.2	E ±0.5	r ±0.2
A, B	180	60	9.5	13.1	13.0	2.0	1.0
C, D	180	60	13.5	18.5	13.0	2.0	1.0
	255	80	13.5	18.5	13.0	2.0	1.0

● SOLDERING CONDITIONS

◆ REFLOW SOLDERING CONDITIONS



Period of initial temperature rising : t1	Period of preheat : t2	Period over 230°C : t3	Peak temperature : T
(room temperature) ~150°C 3°C/ sec MAX	150~180°C 60~120 sec	30~60 sec	260°C MAX

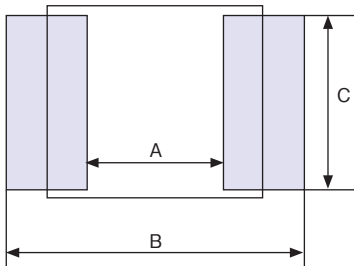
※ Temperature is measured at the surface of capacitor.

- 1) Holding time at the peak temperature should be as short as possible.
- 2) Reflow soldering cycle is limited to two (2). The second soldering should be done after the capacitor itself has returned to room temperature.
- 3) Please consult us in advance if your reflow soldering condition is different from recommended condition.

◆ RECOMMENDED LAND SIZE

For designing land size, refer to the following recommended land size.

Please consult us in advance if your land desing is vastly different from recommended land size.



Chip size	(mm) Dimensions		
	A	B	C
3216	1.8	3.6	1.4
3225	1.8	3.6	2.3
4532	2.7	5.7	3.0
5750	3.5	7.8	4.5