

**MMBA SERIES**

**Across-the-line**

- Reliability is excellent because these capacitors provide self-healing.
- Coated with flame-retardant (UL94 V-0) epoxy resin.

RoHS compliance

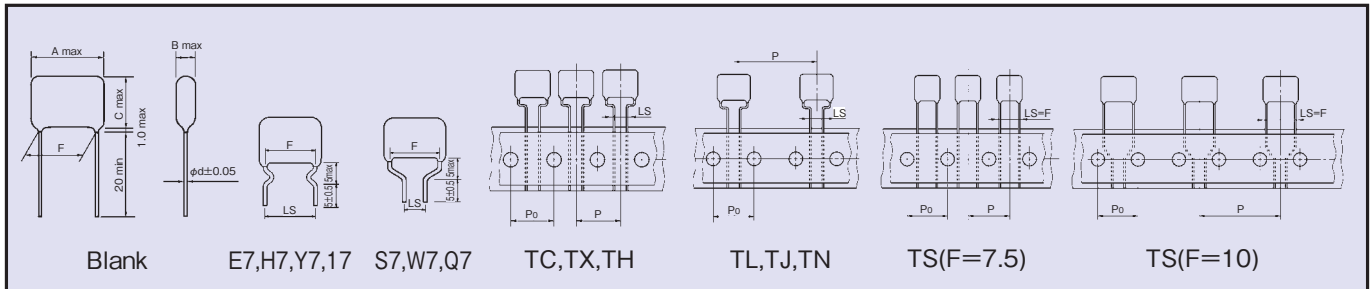


**SPECIFICATIONS**

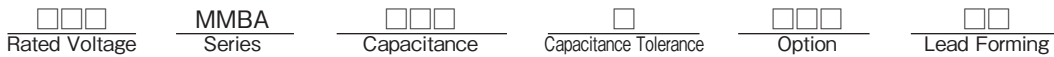
Category Temperature Range	-40°C~+85°C	
Rated Voltage (U <sub>R</sub> )	125Vac, 250Vac	
Capacitance Tolerance	±10%(K)	
tanδ	0.01max at 1kHz	
Voltage Proof	U <sub>R</sub> ×230% 60s	
Insulation Resistance	125VAC C ≤ 0.33μF:9000MΩ min C > 0.33μF:3000ΩF min	250VAC 2000MΩ min
Reference Standard	JIS C 5101-1	

**DIMENSIONS**

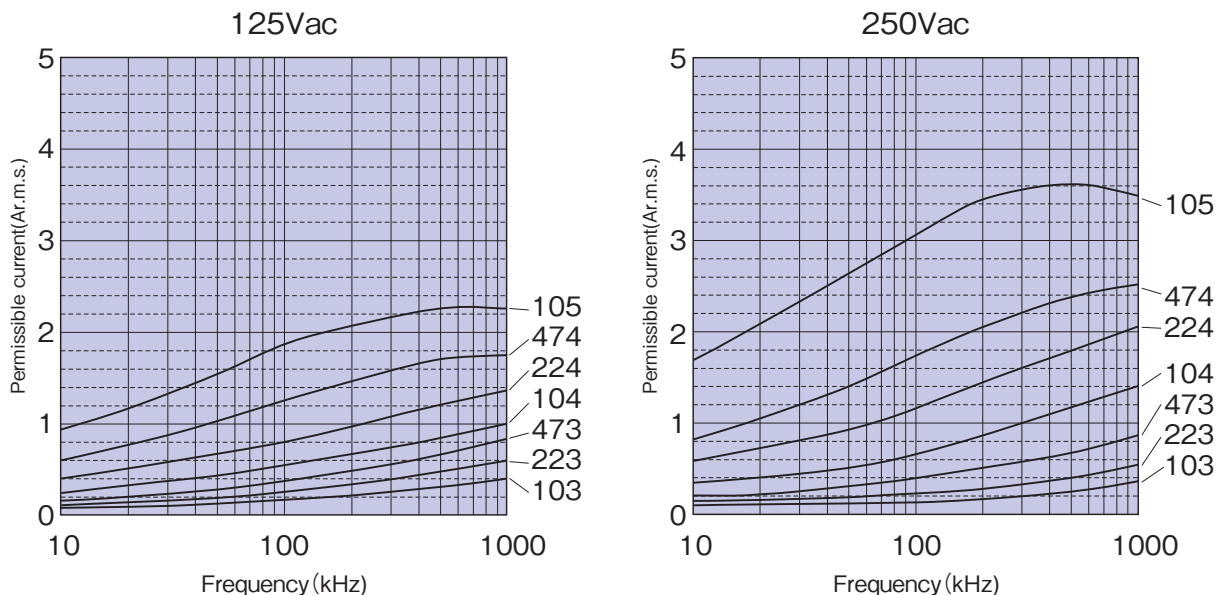
(mm)



**PART NUMBER**



**PERMISSIBLE CURRENT FOR FREQUENCY**



◆ STANDARD SIZE

□:Capacitance Tolerance \*\*Lead Forming

Rated Voltage	Cap(μF)	Dimensions (mm)						Typical Packaging Quantity (pcs)								Part No.
								Long Lead type		Taping Ammo Pack Type - Style						
		A	B	C	F±1.0	LS±0.5	d	Bag	Carton	TC	TX, TH	TL, TJ	TN	TS		
125 Vac	0.01	10.0	5.5	9.5	7.5	5.0/7.5	0.6	200	6,000	1,000	-	-	-	1,000	125MMBA103□**	
	0.012	10.0	5.5	9.5	7.5	5.0/7.5	0.6	200	6,000	1,000	-	-	-	1,000	125MMBA123□**	
	0.015	10.0	5.5	9.5	7.5	5.0/7.5	0.6	200	6,000	1,000	-	-	-	1,000	125MMBA153□**	
	0.018	10.0	5.5	9.5	7.5	5.0/7.5	0.6	200	6,000	1,000	-	-	-	1,000	125MMBA183□**	
	0.022	10.0	5.5	9.5	7.5	5.0/7.5	0.6	200	6,000	1,000	-	-	-	1,000	125MMBA223□**	
	0.027	10.0	5.5	9.5	7.5	5.0/7.5	0.6	200	6,000	1,000	-	-	-	1,000	125MMBA273□**	
	0.033	10.0	5.5	9.5	7.5	5.0/7.5	0.6	200	6,000	1,000	-	-	-	1,000	125MMBA333□**	
	0.039	10.0	5.5	10.0	7.5	5.0/7.5	0.6	200	5,000	1,000	-	-	-	1,000	125MMBA393□**	
	0.047	10.0	6.0	10.5	7.5	5.0/7.5	0.6	200	5,000	1,000	-	-	-	1,000	125MMBA473□**	
	0.056	10.0	6.0	11.0	7.5	5.0/7.5	0.6	200	4,000	1,000	-	-	-	1,000	125MMBA563□**	
	0.068	10.0	6.0	12.5	7.5	5.0/7.5	0.6	200	4,000	1,000	-	-	-	1,000	125MMBA683□**	
	0.082	10.0	6.5	13.0	7.5	5.0/7.5	0.6	200	4,000	1,000	-	-	-	1,000	125MMBA823□**	
	0.1	10.0	6.0	9.0	7.5	5.0/7.5	0.5	200	6,000	1,000	-	-	-	1,000	125MMBA104□**	
	0.12	10.0	6.0	9.0	7.5	5.0/7.5	0.5	200	6,000	1,000	-	-	-	1,000	125MMBA124□**	
	0.15	10.0	6.5	10.0	7.5	5.0/7.5	0.5	200	5,000	1,000	-	-	-	1,000	125MMBA154□**	
	0.18	10.0	6.5	11.0	7.5	5.0/7.5	0.5	200	5,000	1,000	-	-	-	1,000	125MMBA184□**	
	0.22	10.0	7.0	12.0	7.5	5.0/7.5	0.5	200	4,000	1,000	-	-	-	1,000	125MMBA224□**	
	0.27	13.0	6.0	11.5	10.0	5.0/7.5/10.0	0.6	200	4,000	-	1,000	500	-	500	125MMBA274□**	
	0.33	13.0	6.5	12.0	10.0	5.0/7.5/10.0	0.6	200	3,000	-	1,000	500	-	500	125MMBA334□**	
	0.39	13.0	7.0	12.5	10.0	5.0/7.5/10.0	0.6	200	3,000	-	500	500	-	500	125MMBA394□**	
0.47	13.0	8.0	13.5	10.0	5.0/7.5/10.0	0.6	100	2,000	-	500	500	-	500	125MMBA474□**		
0.56	13.0	8.0	15.0	10.0	5.0/7.5/10.0	0.6	100	2,000	-	500	400	-	400	125MMBA564□**		
0.68	13.0	8.5	15.5	10.0	5.0/7.5/10.0	0.6	100	2,000	-	500	400	-	400	125MMBA684□**		
0.82	18.0	7.5	14.0	15.0	5.0/7.5/10.0/15.0	0.6	100	2,000	-	-	400	400	-	125MMBA824□**		
1	18.0	8.0	15.5	15.0	5.0/7.5/10.0/15.0	0.6	100	1,500	-	-	400	400	-	125MMBA105□**		
250 Vac	0.01	13.0	5.0	9.0	10.0	5.0/7.5/10.0	0.6	200	5,000	-	1,000	500	-	500	250MMBA103□**	
	0.012	13.0	5.5	9.5	10.0	5.0/7.5/10.0	0.6	200	5,000	-	1,000	500	-	500	250MMBA123□**	
	0.015	13.0	6.5	10.5	10.0	5.0/7.5/10.0	0.6	200	4,000	-	1,000	500	-	500	250MMBA153□**	
	0.018	13.0	6.5	10.5	10.0	5.0/7.5/10.0	0.6	200	4,000	-	1,000	500	-	500	250MMBA183□**	
	0.022	13.0	6.0	9.5	10.0	5.0/7.5/10.0	0.6	200	4,000	-	1,000	500	-	500	250MMBA223□**	
	0.027	13.0	5.5	11.0	10.0	5.0/7.5/10.0	0.6	200	4,000	-	1,000	500	-	500	250MMBA273□**	
	0.033	13.0	5.5	11.0	10.0	5.0/7.5/10.0	0.6	200	4,000	-	1,000	500	-	500	250MMBA333□**	
	0.039	13.0	6.0	11.5	10.0	5.0/7.5/10.0	0.6	200	4,000	-	1,000	500	-	500	250MMBA393□**	
	0.047	13.0	7.0	12.0	10.0	5.0/7.5/10.0	0.6	200	3,000	-	1,000	500	-	500	250MMBA473□**	
	0.056	18.0	5.5	11.0	15.0	5.0/7.5/10.0/15.0	0.6	200	3,000	-	-	500	400	-	250MMBA563□**	
	0.068	18.0	6.0	11.0	15.0	5.0/7.5/10.0/15.0	0.6	100	3,000	-	-	500	400	-	250MMBA683□**	
	0.082	18.0	6.5	11.5	15.0	5.0/7.5/10.0/15.0	0.6	100	3,000	-	-	500	400	-	250MMBA823□**	
	0.1	18.0	6.5	13.5	15.0	5.0/7.5/10.0/15.0	0.6	100	2,000	-	-	500	400	-	250MMBA104□**	
	0.12	18.0	7.0	13.5	15.0	5.0/7.5/10.0/15.0	0.8	100	2,000	-	-	500	400	-	250MMBA124□**	
	0.15	18.0	7.5	14.5	15.0	5.0/7.5/10.0/15.0	0.8	100	1,500	-	-	400	400	-	250MMBA154□**	
	0.18	18.0	8.0	15.0	15.0	5.0/7.5/10.0/15.0	0.8	100	1,500	-	-	400	400	-	250MMBA184□**	
	0.22	18.5	9.0	15.5	15.0	5.0/7.5/10.0/15.0	0.8	100	1,500	-	-	400	300	-	250MMBA224□**	
	0.27	25.5	7.0	16.0	22.5	15.0/22.5	0.8	50	1,500	-	-	-	-	-	250MMBA274□**	
	0.33	25.5	8.0	16.5	22.5	15.0/22.5	0.8	200	1,000	-	-	-	-	-	250MMBA334□**	
	0.39	25.5	8.5	17.0	22.5	15.0/22.5	0.8	200	1,000	-	-	-	-	-	250MMBA394□**	
0.47	25.5	9.5	18.0	22.5	15.0/22.5	0.8	200	800	-	-	-	-	-	250MMBA474□**		
0.56	25.5	9.5	20.0	22.5	15.0/22.5	0.8	200	800	-	-	-	-	-	250MMBA564□**		
0.68	25.5	10.5	21.0	22.5	15.0/22.5	0.8	100	500	-	-	-	-	-	250MMBA684□**		
0.82	31.0	10.0	20.5	27.5	27.5	0.8	100	500	-	-	-	-	-	250MMBA824□**		
1	31.0	11.0	22.0	27.5	27.5	0.8	100	500	-	-	-	-	-	250MMBA105□**		

Note) 1. Operating circuit (Fig.1, Fig.2)

2. When operating capacitor for noise suppression, voltage of pulse applied to the capacitor shall be within value specified in Table 1.

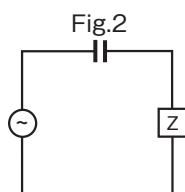
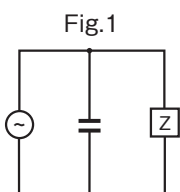


Table 1

Rated Voltage	Pulse Voltage
125Vac	250Vo-p
250Vac	630Vo-p