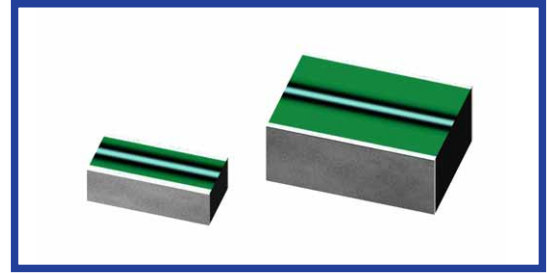


MR SERIES

LW reversal structure, Low ESL

- Surface-mounted device.
- Non-polar capacitor.
- Lead free reflow soldering is available.
- Flow soldering is available.

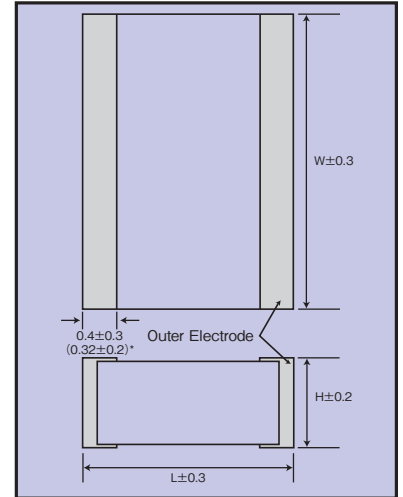
RoHS compliance



◆SPECIFICATIONS

Items	Characteristics	
Category Temperature Range	-55~+125°C	
Rated Voltage Range	16~63Vdc	100Vdc
Capacitance Range	0.010~6.8μF (103~685)	0.15~0.33μF (154~334)
Capacitance Tolerance	±10%(K), ±20%(M)	
Dissipation Factor (tanδ)	1.5% or less(1kHz±20%, 5Vrms or less)	
Voltage Proof	Nothing abnormal shall be found, when applying 150% of the rated voltage for 1minute or 175% of the rated voltage for 1 second to 5 seconds.	
Insulation Resistance	C≤0.1μF:3000MΩ or more (After 1 minute application of rated voltage) C>0.1μF:300MΩ·μF or more (After 1 minute application of rated voltage)	1000MΩ or more (After 1 minute application of rated voltage)

◆DIMENSIONS (mm)



* : Dimensions tolerance of 1632 size

◆PART NUMBER

□□□
MR
□□□
□
□□□
□□
□□□□

Rated Voltage Series Capacitance Capacitance Tolerance Option TP code Chip Size

Code	Rated Voltage
16	16Vdc
25	25Vdc
35	35Vdc
50	50Vdc
63	63Vdc
100	100Vdc

Code	Capacitance
153	0.015μF
224	0.22μF
335	3.3μF

Code	Tolerance
K	±10%
M	±20%

Code	Chip Size
1632	1.6×3.2mm
3245	3.2×4.5mm

◆STANDARD SIZE

□:Tolerance

Rated Voltage (Vdc)	Capacitance (μF)	Size			Part No.
		L (mm)	W (mm)	H (mm)	
16	0.22	1.6	3.2	1.0	16MR224□A11632
	0.33	1.6	3.2	1.4	16MR334□A21632
	4.7	3.2	4.5	1.8	16MR475□C23245
	6.8	3.2	4.5	2.2	16MR685□C33245
25	0.15	1.6	3.2	1.0	25MR154□A11632
	0.22	1.6	3.2	1.4	25MR224□A21632
	3.3	3.2	4.5	1.8	25MR335□C23245
	4.7	3.2	4.5	2.2	25MR475□C33245
35	0.068	1.6	3.2	1.0	35MR683□A11632
	0.10	1.6	3.2	1.0	35MR104□A11632
	0.15	1.6	3.2	1.4	35MR154□A21632
	2.2	3.2	4.5	1.8	35MR225□C23245
	3.3	3.2	4.5	2.6	35MR335□C43245

Rated Voltage (Vdc)	Capacitance (μF)	Size			Part No.
		L (mm)	W (mm)	H (mm)	
50	0.010	1.6	3.2	1.0	50MR103□A11632
	0.015	1.6	3.2	1.0	50MR153□A11632
	0.022	1.6	3.2	1.0	50MR223□A11632
	0.033	1.6	3.2	1.0	50MR333□A11632
	0.047	1.6	3.2	1.0	50MR473□A11632
	0.068	1.6	3.2	1.4	50MR683□A21632
	1.0	3.2	4.5	1.8	50MR105□C23245
	1.5	3.2	4.5	2.2	50MR155□C33245
63	0.47	3.2	4.5	1.4	63MR474□C13245
	0.68	3.2	4.5	1.4	63MR684□C13245
	1.0	3.2	4.5	2.2	63MR105□C33245
100	0.15	3.2	4.5	1.4	100MR154□C13245
	0.22	3.2	4.5	1.8	100MR224□C23245
	0.33	3.2	4.5	2.2	100MR334□C33245

Size Code Conversion

mm	inch
1632	0612
3245	1218