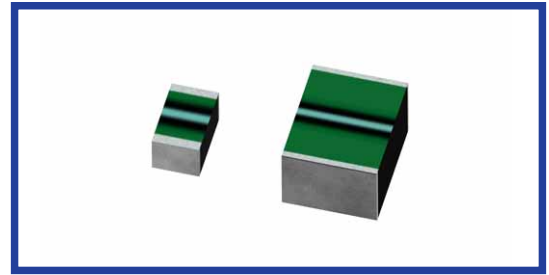


MS SERIES

NEW

85°C85%RH Humidity Resistant

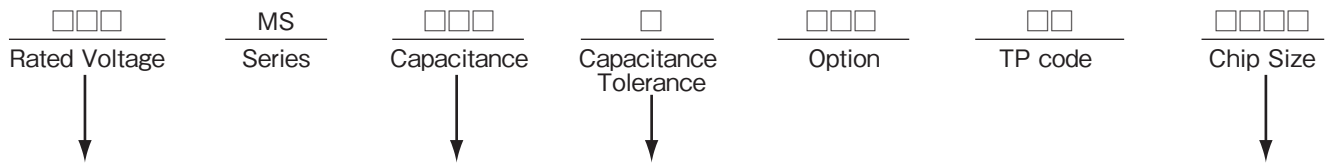


- 85°C85%RH 1000hours.
(Capacitance change:Within±20%)
- Surface-mounted device.
- Non-polar capacitor.
- Lead free reflow soldering is available.
- Flow soldering is available.

◆SPECIFICATIONS

Items	Characteristics
Category Temperature Range	-55~+125°C
Rated Voltage Range	10~50Vdc
Capacitance Range	0.001~2.2uF (102~225)
Capacitance Tolerance	±10%(K), ±20%(M)
Dissipation Factor (tanδ)	1.5% or less(1kHz±20%, 5Vrms or less)
Voltage Proof	Nothing abnormal shall be found, when applying 150% of the rated voltage for 1 minute or 175% of the rated voltage for 1 second to 5 seconds.
Insulation Resistance	C≤0.1μF:3000MΩor more (After 1 minute application of rated voltage) C>0.1μF:300MΩ·μF or more (After 1 minute application of rated voltage)

◆PART NUMBER



Code	Rated Voltage
10	10Vdc
16	16Vdc
25	25Vdc
35	35Vdc
50	50Vdc

Code	Capacitance
153	0.015μF
224	0.22μF
105	1.0μF

Code	Tolerance
K	±10%
M	±20%

Code	Chip Size
2012	2.0×1.25mm
3216	3.2×1.6mm
3225	3.2×2.5mm

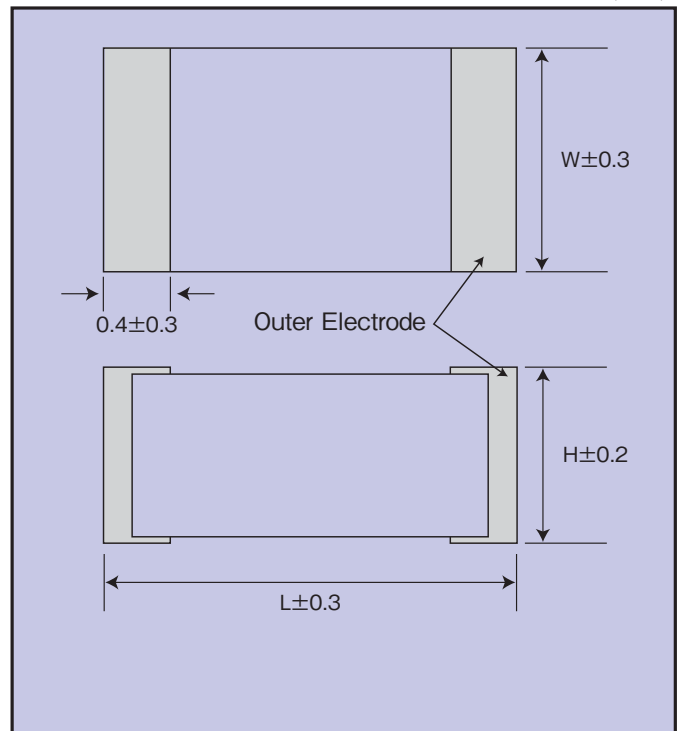
◆STANDARD SIZE

□:Tolerance

Rated Voltage (Vdc)	Capacitance (μF)	Size			Part No.	
		L (mm)	W (mm)	H (mm)		
10	0.15	2.0	1.25	1.0	10MS154□Z22012	
	1.0	3.2	1.6	1.4	10MS105□A23216	
	1.5	3.2	2.5	1.4	10MS155□B13225	
	2.2	3.2	2.5	1.8	10MS225□B23225	
16	0.068	2.0	1.25	0.8	16MS683□Z12012	
	0.10	2.0	1.25	1.0	16MS104□Z22012	
	0.47	3.2	1.6	1.0	16MS474□A13216	
	0.68	3.2	1.6	1.4	16MS684□A23216	
25	1.0	3.2	2.5	1.4	16MS105□B13225	
	0.047	2.0	1.25	1.0	25MS473□Z22012	
	0.22	3.2	1.6	1.0	25MS224□A13216	
	0.33	3.2	1.6	1.4	25MS334□A23216	
25	0.47	3.2	2.5	1.4	25MS474□B13225	
	0.68	3.2	2.5	1.8	25MS684□B23225	
	35	0.0010	2.0	1.25	0.8	35MS102□Z12012
		0.0015	2.0	1.25	0.8	35MS152□Z12012
0.0022		2.0	1.25	0.8	35MS222□Z12012	
0.0033		2.0	1.25	0.8	35MS332□Z12012	
0.0047		2.0	1.25	0.8	35MS472□Z12012	
0.0068		2.0	1.25	0.8	35MS682□Z12012	
0.010		2.0	1.25	0.8	35MS103□Z12012	
0.015		2.0	1.25	0.8	35MS153□Z12012	
0.022		2.0	1.25	0.8	35MS223□Z12012	
0.033		2.0	1.25	1.0	35MS333□Z22012	
0.047		3.2	1.6	1.0	35MS473□A13216	
0.068		3.2	1.6	1.0	35MS683□A13216	
0.10		3.2	1.6	1.0	35MS104□A13216	
0.15		3.2	1.6	1.0	35MS154□A13216	
0.22		3.2	1.6	1.4	35MS224□A23216	
0.33		3.2	2.5	1.4	35MS334□B13225	
0.47	3.2	2.5	1.8	35MS474□B23225		
50	0.0010	3.2	1.6	1.0	50MS102□A13216	
	0.0015	3.2	1.6	1.0	50MS152□A13216	
	0.0022	3.2	1.6	1.0	50MS222□A13216	
	0.0033	3.2	1.6	1.0	50MS332□A13216	
	0.0047	3.2	1.6	1.0	50MS472□A13216	
	0.0068	3.2	1.6	1.0	50MS682□A13216	
	0.010	3.2	1.6	1.0	50MS103□A13216	
	0.015	3.2	1.6	1.0	50MS153□A13216	
	0.022	3.2	1.6	1.0	50MS223□A13216	
	0.033	3.2	1.6	1.0	50MS333□A13216	
	0.047	3.2	1.6	1.4	50MS473□A23216	
	0.068	3.2	2.5	1.4	50MS683□B13225	
0.10	3.2	2.5	1.8	50MS104□B23225		

◆DIMENSIONS

(mm)



Size Code Conversion

mm	inch
2012	0805
3216	1206
3225	1210